

NOZZLE

LANCIA PER LA PROIEZIONE DEL CALCESTRUZZO

Nozzles for shot-crete applications - plastic body, hardened steel insert, steel manifold, with valves

Lancia per la proiezione del calcestruzzo per attrezzature shot-creting - corpo in plastica, inserti in acciaio temprato, collettore in acciaio, completa di valvole

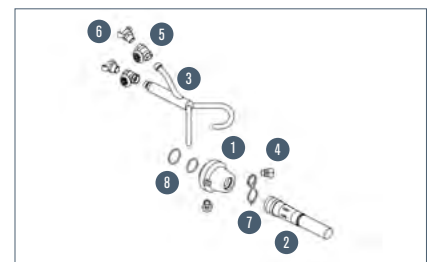
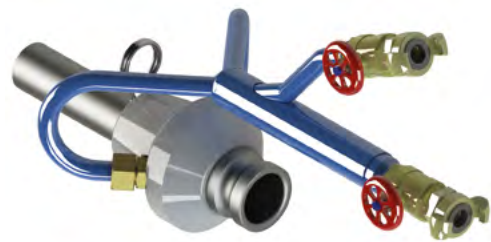
DESCRIPTION | DESCRIZIONE

2"- 50 mm Nozzle made by a plastic body, a hardened steel insert and a steel manifold, complete with valves.

Lancia con corpo in plastica. Inserti in acciaio temprato, collettore in acciaio, completa di valvole

SHOT-CRETE NOZZLE

LANCIA SHOT-CRETE



IT	DESCRIPTION	MODEL - Tipo	PART NUMBER Codice	kg	lbs
	Complete NOZZLE	LC 50 - CL	S3010227	4.650	10.251
1	Body		S3010258	0.500	1.102
2	Fitting		S3010158	1.800	3.968
3	Manifold		S3010209	0.870	1.918
4	Fittings		S3011297	0.140	0.308
5	Valves		K3006730	0.250	0.551
6	Fittings		S3010256	0.210	0.463
7	Spring		K3005470	0.052	0.114
8	Sealing set		S3010213	0.002	0.004